

Safety comes out.

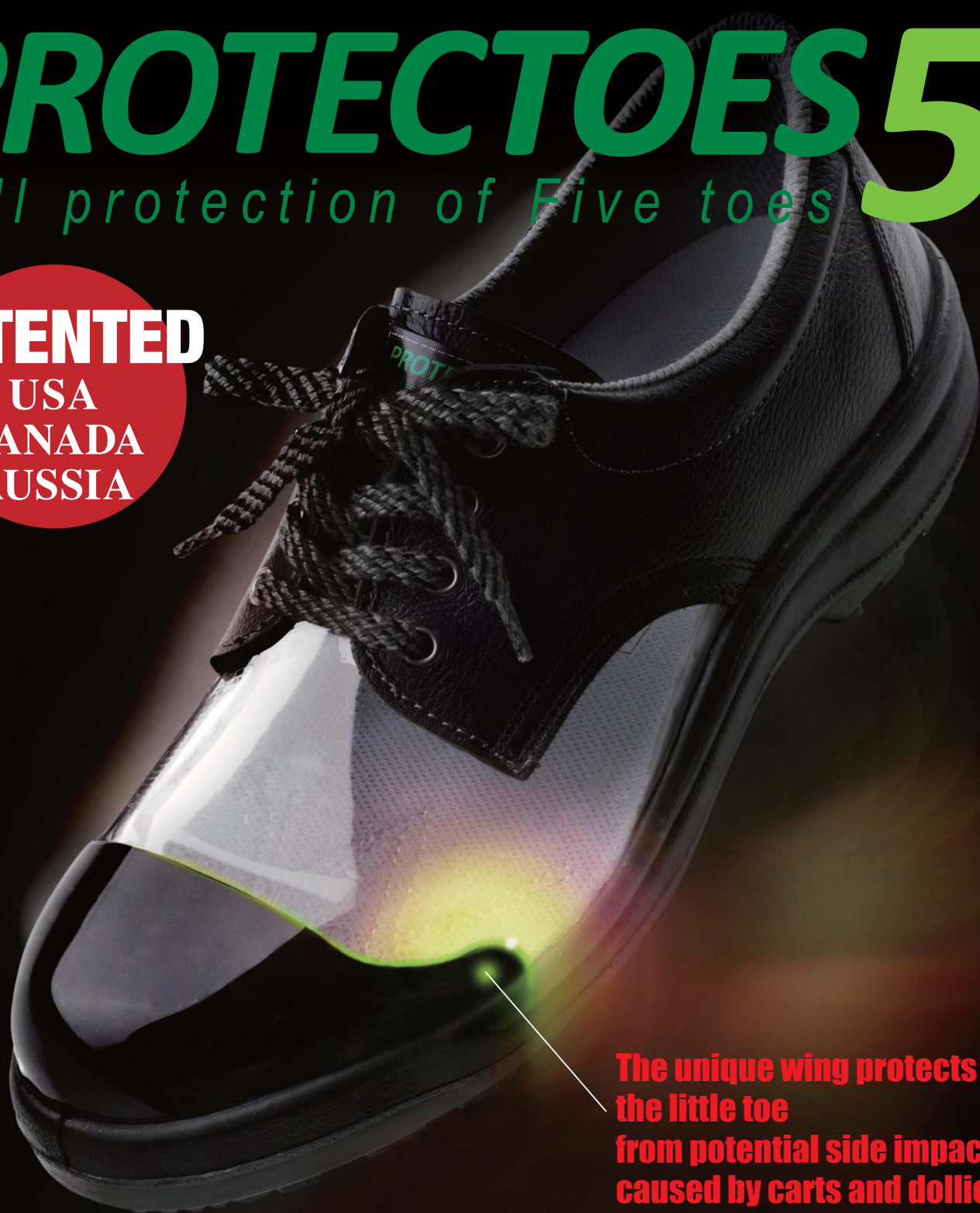


PROTECTOES 5

Full protection of Five toes

PATENTED

in USA
CANADA
RUSSIA



The unique wing protects the little toe from potential side impact caused by carts and dollies.

WORLD'S First TOECAP
that protects all 5 toes – COMFORTABLY!

Toecap that exceeds safety standards

Your toes, the little ones in particular, are at constant risk of injury caused by the wheels of carts and dollies at workplace.

To tackle this risk, Midori Anzen has developed Protectoes5 - world's first revolutionary toecap that provides full protection to all five toes.

Experience the innovative technology that exceeds safety standards – only from Midori Anzen.

PATENTED
in USA
CANADA
RUSSIA



Standard Toecap

Protection from conventional toecap does not extend to the little toes due to the problem of flexibility.



PROTECTOES5 Toecap

Our new PROTECTOES5 can protect the little toe while maintaining optimal flexibility.



PROTECTOES5

Full protection of Five toes

Most unique feature of PROTECTOES5 - the little toe protection wing that effectively shields the toe from lateral impact.



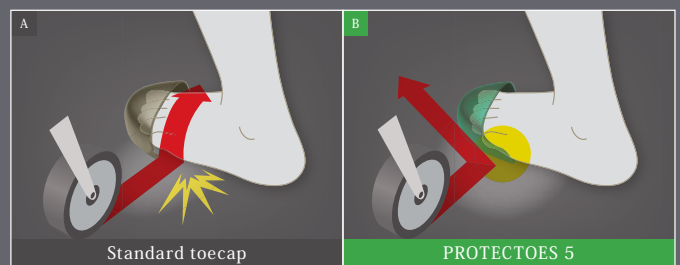
The unique wing protects the little toe from potential side impact caused by carts and dollies.

PROTECTIVE MECHANISM

In the case of standard work shoes without toecap extending over the little toes, our toes are at risk of potential injury from the impact of carts and dollies wheel (see figure A).

In answer to that, PROTECTOES5 toecap is shaped to hinder the wheels of carts and dollies from driving over our feet, thereby providing protection to all 5 toes (see figure B).

*supervised by Shigeru Miura JAPAN RAILWAY TRACK CONSULTANTS CO., LTD.



UNIQUE FLEXIBLE SHAPE

Figure A and C show a conventionally extended toecap which, although being able to protect all 5 toes, tends to contact the instep whenever toes are bent. In contrast, figure B and D show our PROTECTOES5 in action, fully enabling smooth bending of toes without instep contact by virtue of its proprietarily developed shape.

